

A photograph of a modern office desk. In the foreground, a silver laptop is open, displaying the text "Driving your business" on its screen. To the right of the laptop is a black mouse. In front of the laptop is a dark blue folder or notebook. The desk is light-colored wood. In the background, there are several potted plants, including a large white pot with a green plant and a smaller white pot with a succulent. A window with a view of greenery is visible in the background.

It's Not Just Risks: How Generative AI Can Help Secretaries of State Optimize Operations



ANCHOR CHANGE



Presentation Goals

1. Introduction to Generative AI: What it is and how it differs from and enhances other tools.

2. Practical Applications for Secretaries of State:

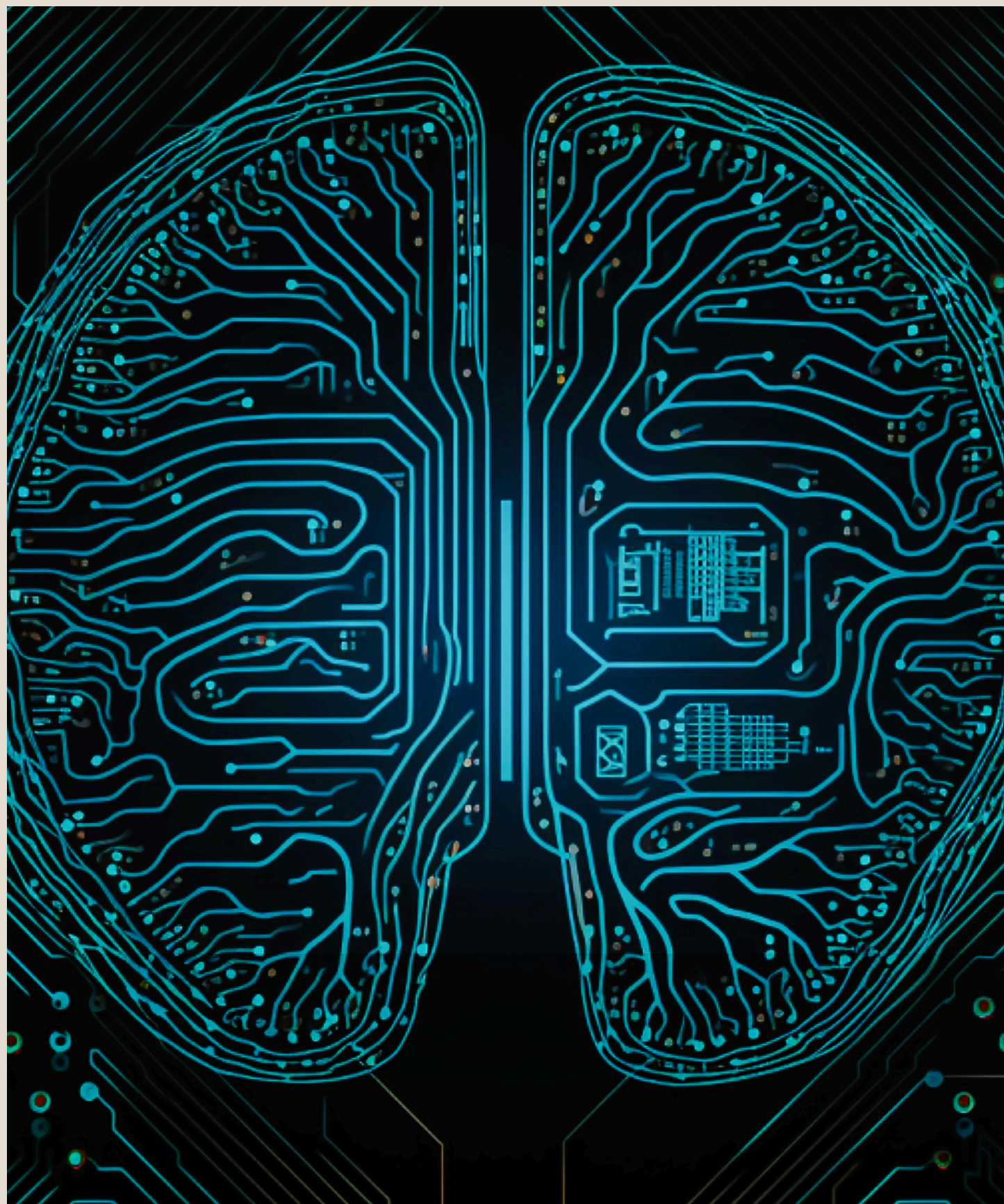
- Enhancing office productivity
- Sorting and organizing documents
- Content creation

3. Implementation Considerations:

- Data privacy and security
- Ethical use and transparency

AI Primer: Understanding Generative AI





What is AI?

Artificial Intelligence (AI) is a type of technology that allows machines to mimic human intelligence. It helps computers learn, reason, and make decisions, often faster and on a larger scale than humans can. Think of it as teaching a machine to think and act like a human in specific ways.

Narrow AI (or Weak AI)

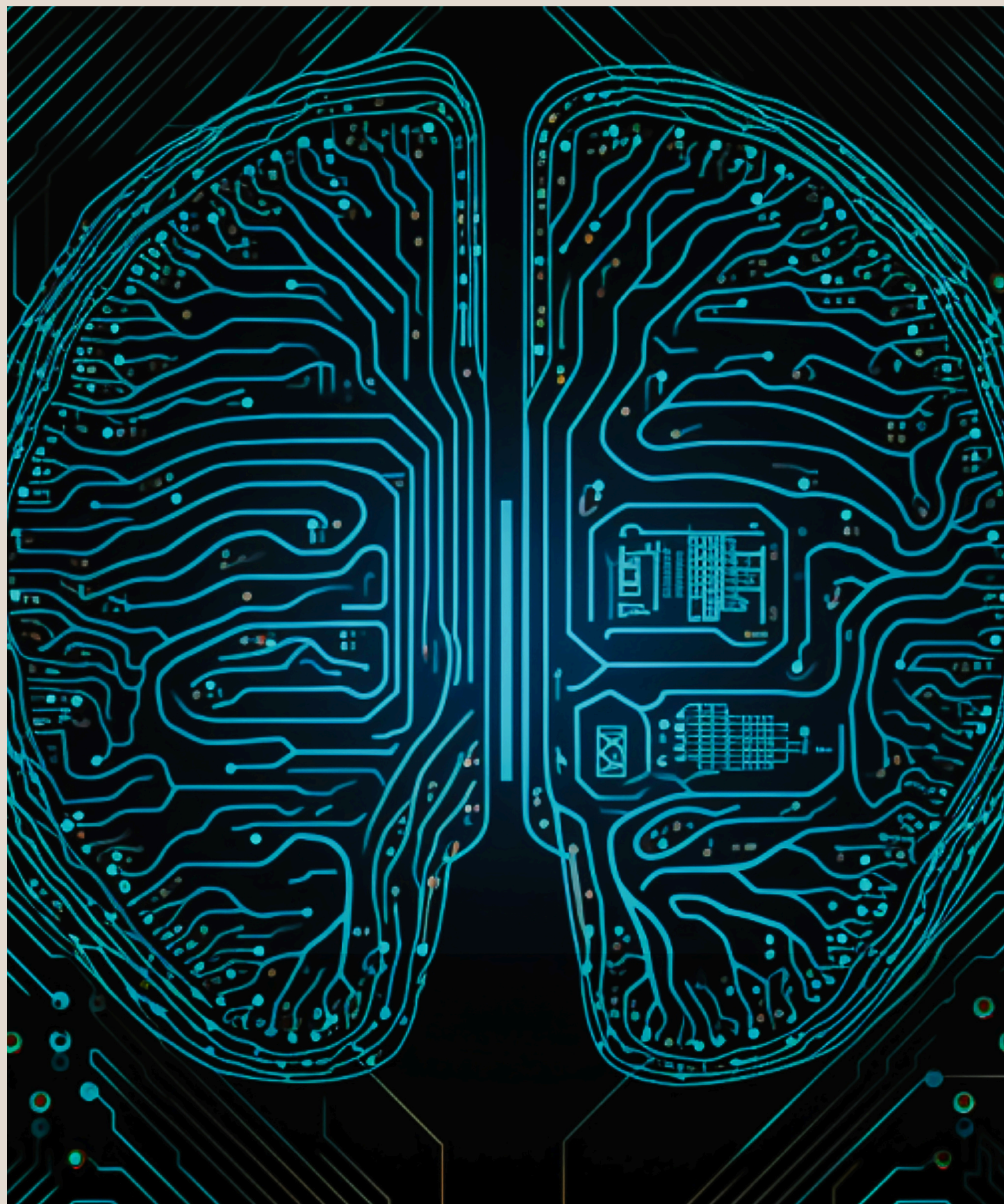
AI that is designed to perform one specific task. It's highly focused and cannot do anything outside its area of expertise. Siri, Alexa.

General AI (or Strong AI) (This doesn't exist yet)

AI that could perform any intellectual task a human can do. It would think, learn, and solve problems across many areas, just like a human.

Generative AI (A Type of Narrow AI)

AI that creates something new, like text, images, music, or videos, based on patterns it has learned from data. ChatGPT, Claude.



What is AI?

Artificial Intelligence (AI) is a type of technology that allows machines to mimic human intelligence. It helps computers learn, reason, and make decisions, often faster and on a larger scale than humans can. Think of it as teaching a machine to think and act like a human in specific ways.

Machine Learning (ML) (The Foundation of Most AI)

A method where computers learn from data to improve their performance over time without being explicitly programmed. Recommendations.

Deep Learning (A Subset of Machine Learning)

A more advanced form of machine learning that uses structures called neural networks (inspired by the human brain) to process data in layers and make complex decisions. Self-driving cars.

Reinforcement Learning

AI that learns by trial and error, receiving rewards or penalties based on its actions. AI playing chess and learning from each game.

Key AI Companies and Players



ANTHROPIC

Google

Focused on integrating AI seamlessly into its ecosystem with an emphasis on tools for productivity, search, and responsible AI development.

Gemini, Bard,
Notebook LLM

Meta

Emphasizes open-source AI to democratize access, particularly in natural language processing and large-scale model deployment.

Llama, Meta Ray-Bans

Microsoft

Leveraging partnerships (like with OpenAI) to integrate AI across its platforms, focusing on enterprise solutions and ethical AI frameworks.

Co-pilot

OpenAI

Pioneering in generative AI with a focus on developing advanced models like GPT while balancing accessibility with safety and ethical concerns.

ChatGPT, DALL-E, Sora

Anthropic

Prioritizes creating safer AI systems with an emphasis on alignment and controllability to ensure ethical and reliable outcomes.

Claude



ANCHOR CHANGE



Practical Applications of AI





Enhancing Office Operations

- Drafting letters, reports, or memos.
- Structuring presentations (like this one)
- Summarizing lengthy documents or legislation.
- Translating documents into other languages.
- Scheduling and task prioritization.



Sorting and organizing documents

The European Parliament has transformed the accessibility of the Parliament's archives. Leveraging Anthropic's Claude in Amazon Bedrock, the EU Parliament has created 'Ask the EP Archives', also known as Archibot, a sophisticated AI assistant that makes over 2.1 million official documents readily available to researchers, policymakers, educators, and the public.



Content creation

- Drafting posts for social media platforms
- Editing videos to make online clips
- Creating transcripts



2FA

Implementation Considerations





Privacy and Security Considerations

- Avoid uploading sensitive data to public AI tools.
- Use secure, government-compliant AI platforms.
- Train staff on responsible AI use.



Ethical Use and Transparency

- Ensure transparency in how AI-generated outputs are used.
- Verify AI outputs for accuracy and compliance.
- Establish clear guidelines for AI implementation.



Recap

- Generative AI is a tool to support your team's work, enabling faster, more efficient operations.
- Create guardrails and rules for how your offices use AI
- Take the first step: Identify areas where AI can address repetitive tasks or resource-intensive processes.



Thank You!

anchorchange.substack.com

katieharbath@anchorchange.com